

PERSONAL MAC COMPUTER

Accessing Wireless on Your Personal Mac Computer (not iPhones, iPads or Android)

Used by **LVJUSD staff and students** for their **non-lvjusd** computers

It is **strongly encouraged** that you go to <https://cloudpath.lvjusd.k12.ca.us> to **pre-register** your device before bringing to school. Follow the steps below and your device will connect to the LVJUSD-BYOD network automatically.



1. Connect or join the **LVJUSD-Onboarding** wireless network.
2. Open a browser window such as Chrome, Firefox or Safari. If you don't see a welcome message type in **www.livermoreschools.com** so the welcome screen appears to start the registration process.

Agree to Terms & Conditions

Click **Start**

3. Select **Student/Staff**


4. Login with your **LVJUSD username and password.**

Click **Continue**

5. **Download** the Cloudpath.zip file.




Welcome to the Livermore Valley Joint Unified School District Network

 Access to the Livermore Valley Joint Unified School District network is restricted to authorized users and requires acceptance of the Terms & Conditions below.

Once authorized for access, your device will be configured with a unique certificate for network access.

I agree to the [Terms & Conditions](#)

Start >

 **Student/Staff**

Register your personal devices with your District login for one year.


Your username and password are required to access the network.

Username:

Password:

< Back **Continue >**

Mac OS X

 **Download for Mac OS X**
Cloudpath.zip

Safari Users: After clicking the button, locate the Cloudpath folder in the Downloads window and double-click to open it. Then, double-click Cloudpath to launch the application.

6. **Double-click** the Cloudpath application you downloaded.



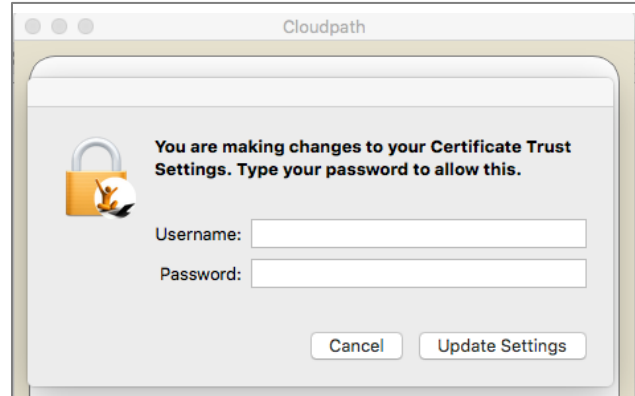
Cloudpath



config

7. Cloudpath will run and ask you to login with **your computer username and password** to add the certificate to your profile.

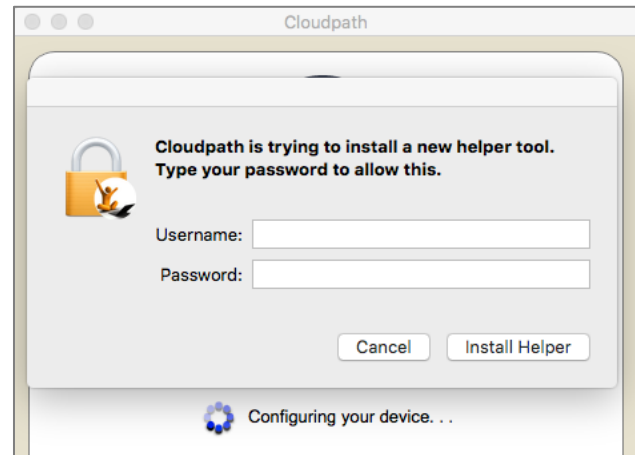
Click **Update Settings**



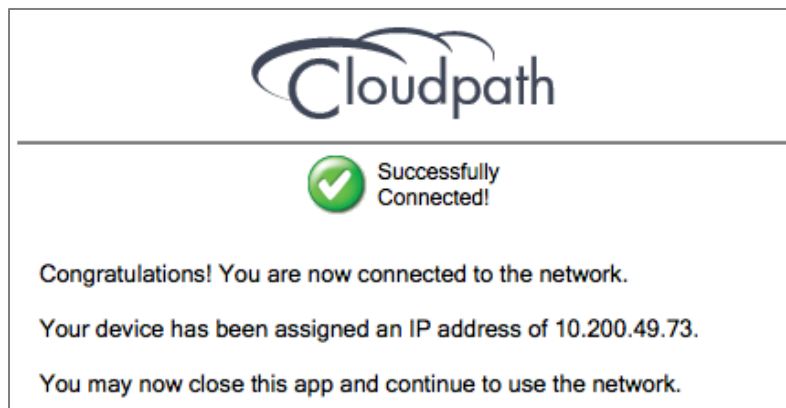
8. Cloudpath will now install the helper program to get your device on the wireless.

Login with **your computer administrator username and password**.

Click **Install Helper**



9. When done you should see "Successfully Connected!"
You are now connected to the **LVJUSD-BYOD** wireless network.



**If pre-registered, your personal device will not connect until at school.